



- Program**
- | | | | |
|----|---------------------------------|----|---------------------------------|
| 1 | Quarry Drive | 11 | Basketball Half-Court (Private) |
| 2 | Public Carpark Vehicle Entry | 12 | Table Tennis (Private) |
| 3 | Public Carpark Pedestrian Entry | 13 | Pool (Private) |
| 4 | Entry Garden | 14 | Orchard (Private) |
| 5 | Cafe Frontage | 15 | Water Feature Concourse |
| 6 | Wellness Centre Frontage | 16 | Water Pump Pole |
| 7 | Concierge | 17 | Viewing Deck |
| 8 | Brickyard | 18 | Drop-Off Area |
| 9 | Kitchen Garden | 19 | Service Road |
| 10 | Tennis Court (Private) | | |

- General**
- Site Boundary
 - Precinct & Lot Boundary
- Preparation + Groundworks**
- Proposed Contour Line
 - Existing Contour Line
 - + FL 580.0 Proposed Finished Level
 - + EL 580.0 Existing Finished Level
 - [FFL 580.00] Finished Floor Level
 - Proposed Fall
- Walls + Edges**
- Existing Concrete Channel Drain
 - Existing Brick Wall
 - Existing Concrete Wall
 - In situ Concrete Edge
 - Brick Wall
 - Brick Wall
 - Steel Edge / Wall
- Pavements**
- Asphaltic Concrete
 - Brick (white colour)
 - Brick (brown colour)
 - Compacted Aggregate
 - Crushed Bricks
 - In situ Concrete
 - Reinforced Grass
 - Stone Setts
- Architecture and Site Structures**
- Heritage Building / Chimney Stack
 - Proposed Building
 - Architecture Catwalk
 - Structure Below
- Rails + Fencing**
- Fence
 - Access gate
- Water Elements**
- Water Feature Concourse
 - Pond
 - Reflection Pool
 - Sediment basin
 - Wetland
- Furniture + Fittings**
- Proposed Seating
 - Proposed Bollards
 - Proposed Table Set
 - Proposed Long Table Set
- Planting**
- Lawn
 - Native Grass Mix 01
 - Native Grass Mix 02
 - Native Grass Mix 03
 - Garden Mix 01
 - Garden Mix 02
 - Garden Mix 03
 - Garden Mix 04
 - Garden Mix 05
 - Vegetable Gardens / Rooftop
- Trees**
- Proposed Tree
 - Existing Tree to Retain
 - Existing Tree to Retain



© Copyright McGregor Coxall
AUS ACN 082 334 290
UK 10199853
PRC ID NO. 06000002201607080008
Sydney Melbourne Shenzhen Bristol
www.mcgregorcoxall.com

Client
DOMA GROUP

Project Team
SJB Architects
Sixdegrees
CUMULUS
Sellick Consultants

Project Name
YARRALUMLA BRICKWORKS

Project No.
0619SYD

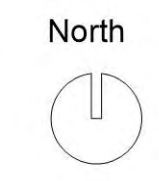
Address
Yarralumla ACT 2600

Key Plan

Issue Log			
A	Draft issue for EDP	MK/JM	16/2/2021
B	Draft issue for EDP	MK/JM	26/03/2021
C	Draft issues for EDP	MK/JM	28/04/2021
Rev	Revision Description	By / Checked	Date

Scale
1 : 1000 @ A1

All dimensions are in millimetres unless otherwise noted.
Do not scale from this drawing.



Phase
Schematic Design

Sheet Title
Landscape Plan

Sheet No.
LD-EDP-101

Rev
C



Existing boundary fences retained. Black metal fence to be removed.



Private Area Fence & Entry



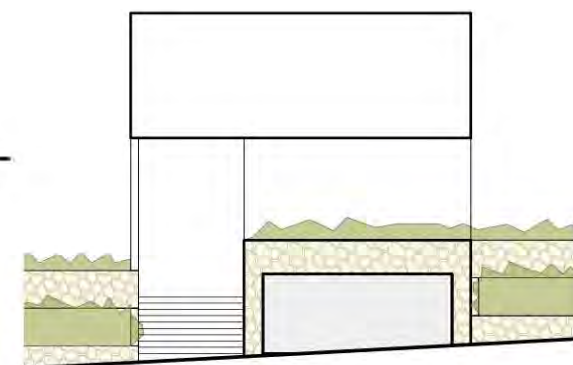
Existing fence to be retained and to be re-used with other parts where the fence has been removed (Bentham Street)



Existing private thatched fence
Boundary Line
Existing steel fence to be removed



Chainwire fence



Referencing Stewart Architecture Elevation



Tennis Court Fence & Entry



Paling Fence



Dense Vegetation



© Copyright McGregor Coxall
AUS ACN 082 334 290
UK 10199853
PRC ID NO. 06000002201607080008
Sydney Melbourne Shenzhen Bristol
www.mcgregorcoxall.com

Client
DOMA GROUP

Project Team
SJB Architects
Sixdegrees
CUMULUS
Sellick Consultants

Project Name
YARRALUMLA BRICKWORKS

Project No.
0619SYD

Address
Yarralumla ACT 2600

Key Plan

Issue Log

A	Draft plan for review	MK/JM	16/04/2021
B	Draft plan for review	MK/JM	28/04/2021

Rev	Revision Description	By / Checked	Date
-----	----------------------	--------------	------

Scale
1 : 1000 @ A1

All dimensions are in millimetres unless otherwise noted.
Do not scale from this drawing.

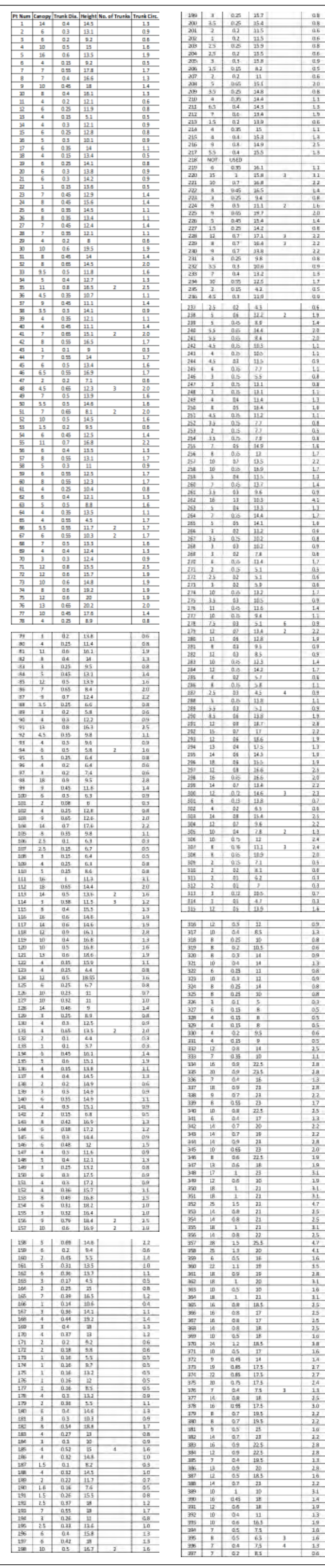
North



Phase
Schematic Design
Sheet Title
Fencing plan reference images
Sheet No.
LD-EDP-302

Rev
B

Survey data including services shown on this plan is correct at the date of survey. Site conditions may have altered since the date of survey & we advise that the survey data may need verification.



388	8	0.6	8.5	3	1.0	
389	9	0.6	31	2	0.8	
400	6	0.3	6	2	0.6	
401	5	0.6	3	3	1.0	
402	8	0.3	25	2	0.8	
403	5	0.3	25	2	0.8	
405	24	0.6	12	2	1.0	
406	12	1.1	11	2	1.3	
407	14	1	10.5	3	1.3	
410	12	0.4	3	3	1.0	
411	8	0.5	3	3	1.0	
416	20	1.5	12.1	20	2.7	
420	20	0.8	12	20	2.7	
4101	4	0.215	4.8	0.8	0.6	
4111	4	0.2	5	0.8	0.6	
412	0.3	0.5	2	0.5	0.7	
415	8	0.3	8.8	0.39	0.39	
4161	0.3	0.7	1.6	0.3	2.2	
4151	5	0.25	7.6	0.8	0.8	
4161	3	0.35	6.1	0.5	0.5	
417	0.35	0.8	1	0.3	1.1	
418	4	0.35	6.1	0.5	0.5	
4201	0.3	0.5	6.1	0.5	1.6	
4201	8	0.4	7.7	1	1.3	
421	24	1	2	8.6	20	8.6
422	0.5	0.5	7.3	1	1.6	
423	0.8	0.35	5.9	1.5	1.1	
424	0.8	0.4	5.9	1.5	1.1	
425	30	0.5	7.5	1.6	1.6	
426	9	0.35	13.9	1	1.3	
427	0.45	0.9	14.6	1.4	1.4	
428	5	0.6	5.8	2	1.3	
429	5	0.6	11	1	1.5	
430	11	0.4	4.4	1.3	2.3	
431	28	1	13.2	10	1.1	
432	0.4	0.4	8.7	1.3	1.3	
433	20	0.4	11.6	1.3	1.3	
434	17	0.6	16.4	1.9	1.9	
435	0.8	0.8	12.9	5	2.5	
436	9	0.7	11.7	8	2.2	
437	19	0.8	19.8	10	2.2	
438	8	0.4	24.6	1.3	1.3	
439	6	0.35	31	1.1	1.1	
4401	0.45	0.8	16.4	1.4	1.4	
441	12	0.5	13.1	1.6	1.6	
442	12	0.5	13.1	1.6	1.6	
443	12	0.5	13.1	1.6	1.6	
444	12	0.5	13.1	1.6	1.6	
445	12	0.5	13.1	1.6	1.6	
446	12	0.5	13.1	1.6	1.6	
447	12	0.5	13.1	1.6	1.6	
448	12	0.5	13.1	1.6	1.6	
449	12	0.5	13.1	1.6	1.6	
450	12	0.5	13.1	1.6	1.6	
451	12	0.5	13.1	1.6	1.6	
452	12	0.5	13.1	1.6	1.6	
453	12	0.5	13.1	1.6	1.6	
454	12	0.5	13.1	1.6	1.6	
455	12	0.5	13.1	1.6	1.6	
456	12	0.5	13.1	1.6	1.6	
457	12	0.5	13.1	1.6	1.6	
458	12	0.5	13.1	1.6	1.6	
459	12	0.5	13.1	1.6	1.6	
460	12	0.5	13.1	1.6	1.6	
461	12	0.5	13.1	1.6	1.6	
462	12	0.5	13.1	1.6	1.6	
463	12	0.5	13.1	1.6	1.6	
464	12	0.5	13.1	1.6	1.6	
465	12	0.5	13.1	1.6	1.6	
466	12	0.5	13.1	1.6	1.6	
467	12	0.5	13.1	1.6	1.6	
468	12	0.5	13.1	1.6	1.6	
469	12	0.5	13.1	1.6	1.6	
470	12	0.5	13.1	1.6	1.6	
471	12	0.5	13.1	1.6	1.6	
472	12	0.5	13.1	1.6	1.6	
473	12	0.5	13.1	1.6	1.6	
474	12	0.5	13.1	1.6	1.6	
475	12	0.5	13.1			

Proj No. 10013 Rev
Sheet No. 1 of 1 10013_DT_001
© LANDDATA SURVEYS Pty Limited ABN 97 118 699 728 A0